

Falmouth Yacht Club
2011 Sailing Instructions



RULES

All Falmouth Yacht Club races will be governed by the rules as defined in the current version of *The Racing Rules of Sailing* (RRS).

ENTRIES

Boats declared eligible by the Falmouth Yacht Club race committee may be entered by completing registration with the organizing authority as described in the NOR.

NOTICES TO COMPETITORS

Notices to competitors will be posted on the official notice boards located downstairs in the Falmouth Yacht Club.

CHANGES IN THE SAILING INSTRUCTIONS

Any change in the sailing instructions will be posted before 0900 on the day it will take effect, except that any change in the schedule of races will be posted by 2000 on the day before it will take effect.

SIGNALS MADE ASHORE

Signals made ashore will be displayed at the Falmouth Yacht Club Yardarm. When flag 'AP' is displayed ashore, '1 minute' is replaced with 'not less than 30 minutes' in race signal AP.

2011 Falmouth Yacht Club - Sailing Instructions

SCHEDULE OF RACES

The schedule of races for the season will be posted no later than 2000 hours on the day before the first race. The race committee may publish the schedule of races in official Falmouth Yacht Club correspondence.

There are no set number of races scheduled to be run each day. As many races as practicable will be run for each class.

At the conclusion of each race, all boats should remain in the area of the race committee boat. The next race will be conducted on a back to back basis at the discretion of the race committee in the same time sequence as the first race.

The race committee will inform competitors by oral communication or by displaying code flag “Z” that the last race of a session has been completed.

CLASS FLAGS

<u>Class</u>	<u>Flag</u>	<u>Alternate Flag</u>
210	210 symbol on a white field	Pennant 1
Sonar	Sonar class symbol on a white field	Pennant 2

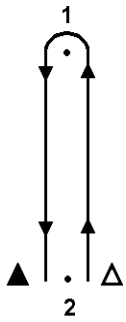
RACING AREA

Attachment ‘A’ shows the location of racing areas.

THE COURSE

Option 1 courses will utilize only portable marks.

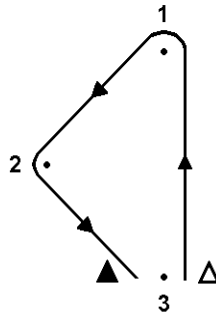
The diagrams with identifying letters below show the basic courses, including the approximate angle between legs, the order in which marks are to be passed, and the side on which each mark is to be left.



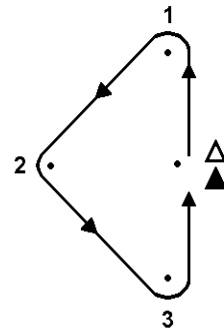
W



D



T



M

△ Usual Committee Boat Starting Position

▲ Usual Committee Boat Finishing Position

W - Windward, leeward

D - Windward, leeward with start and finish in middle of leg.

T - Triangle

M - Triangle with start and finish in middle of leg.

Courses W, D, T, and M may be modified by additional legs, additional times around the course or combination thereof. When one of the basic courses is to be modified, the course posting will show numerically the additional laps or additional legs to be sailed (e.g. W1½, D2, T1⅓).

The course shall be sailed leaving all marks to port unless a green flag is flown from the race committee boat. When a green flag is flown from the race committee boat, the course shall be sailed leaving all marks to starboard.

The approximate distance of the first leg may be displayed from the race committee boat. Failure of approximate distance being posted will not be grounds for redress. This changes rule 62.1(a).

When courses 'W' or 'D' are sailed and the race committee boat flies signal flag W, an "offset mark" may be used at the windward mark. When used, the offset mark will be located approximately 75 to 200 feet to the side of the weather mark and shall be honored as a mark of the course.

2011 Falmouth Yacht Club - Sailing Instructions

Option 2 courses will utilize government marks and may include portable marks

The Race Committee will designate option 2 by displaying code flag “Q” on the Race Committee boat.

The marks with identifying letters are shown below.

A	Portable Mark	N	Vineyard Haven RW “NW” Bell
B	Portable Mark	O	Middle Ground G “27” Bell
F	Green Pond Nun “14”	Q	Allegheny Rock Can “25”
G	L’Hommedieu Shoal Can “15”	R	Nobska Nun “18”
H	Shoal Can “17”	V	Eel Pond RW Nun “EP”
I	Shoal RG Nun	W	Waquoit Bay R “2” Bell
J	L’Hommedieu Shoal Can “11”	X	Small Portable Mark used as starting line mark.
K	Hedge Fence RG Nun	Y	Succonnesett Shoal R “12” Light Buoy
L	Nobska R “26” Bell	Z	Portable Mark. Location to be identified by magnetic compass bearing and distance relative to starting mark.
M	Hedge Fence R ”22” Gong		

The order in which marks are to be rounded or passed is identified by reading the identifying letters from top to bottom.

The course shall be sailed leaving all marks to port unless a green flag is flown from the race committee boat. The course shall be sailed leaving all marks to starboard when a green flag is flown from the race committee boat.

AREAS THAT ARE OBSTRUCTIONS

Any areas marked by swimming area markers and the imaginary straight line connecting swimming area markers are designated as obstructions.

2011 Falmouth Yacht Club - Sailing Instructions

THE START

The starting line will be between a staff displaying an orange flag or shape on a race committee boat and the nearby mark.

Boats whose warning signal has not been made shall avoid the starting area.

A boat starting later than 5 minutes after her starting signal will be scored Did Not Start. This changes rule A4.

CHANGE OF THE NEXT LEG OF THE COURSE

To change the next leg of the course, the race committee will move the original mark or lay a new mark. When the race committee lays a new mark, it will remove the original mark as soon as practicable.

THE FINISH

The finishing line will be between a staff displaying an orange flag or shape on a race committee boat and the nearby finishing mark.

TIME LIMITS

Time limits are shown below. If no boat has passed Mark 1 within the Mark 1 time limit the race will be abandoned.

<u>Class</u>	<u>Time Limit</u>	<u>Mark 1 time limit</u>
Sonar	1.5 hours	0.75 hours
210	1.5 hours	0.75 hours

Boats failing to finish within 30 minutes after the first boat sails the course and finishes will be scored points for the finishing place two more than the number of boats that finished the race. This changes rule 35 and A4.

PROTESTS AND REQUESTS FOR REDRESS

Protests shall be written on US Sailing Protest Forms or on forms available at the FYC office. Protests shall be delivered there within the protest time limit.

For each class, the protest time limit is 60 minutes after the race committee boat returns to shore.

Notices will be posted within 30 minutes of the protest time limit to inform competitors of hearings in which they are parties or named as witnesses. Hearings will be generally be held on the first Sunday at 1800 hours that is closest to the race where the protest was lodged and will be heard in approximately the order of receipt

Notices of protests by the race committee or protest committee will be posted to inform boats under rule 61.1(b).

Breaches of instructions 11.3, 17, 21 will not be grounds for a protest by a boat. This changes rule 60.1(a). Penalties for these breaches may be less than disqualification if the protest committee so decides.

The Falmouth Yacht Club protest committee consists of a senior protest committee and subcommittees appointed for each race. A party to a hearing that believes that a subcommittee has made an error may, within 15 days of receiving the written decision of the subcommittee, ask the protest committee to reopen the hearing. In this case, the senior protest committee will consider the request. This changes Rule 66.

On the last day of the regatta a request for a reopening of a hearing shall be delivered within the protest time limit if the party requesting reopening was informed of the decision on the previous day, or no later than 30 minutes after the party requesting reopening was informed of the decision on that day. This changes rule 66.

SCORING

The Low Point scoring system of RRS Appendix A will apply unless a fleet has registered an alternative with the race committee prior to the start of the racing season and the race committee has posted this on the posting board.

For a series that is held over a period of time longer than a weekend or a regatta, a boat that does not come to the starting area for one or more races shall be scored points for the finishing place two more than the maximum number of boats that came to the starting area for those races. This changes rule A9.

When scoring the FYC July Series and the FYC August Series for a boat, her worst scores shall be excluded as shown below. A boat's score for the Championship Series is the sum of her scores from the July and August Series, after excluding the worst score, as shown below. When scoring all other FYC multi-race events, no scores will be excluded.

12 or more races completed	- exclude 3 worst scores
10 – 11 races completed	- exclude 2 worst scores
8 – 9 races completed	- exclude 1 worst score
7 or fewer races completed	- no score excluded

SAFETY REGULATIONS

A boat that retires from the race shall notify the race committee either before leaving the race course area or, if that is impossible, immediately after arriving ashore. Failure to notify the race committee in a timely manner may result in disqualification for the days racing.

REPLACEMENT OF CREW OR EQUIPMENT

Substitution of competitors will be allowed without prior written approval of the race committee.

Substitution of damaged or lost equipment will be allowed without prior approval by the race committee.

EQUIPMENT AND MEASUREMENT CHECKS

A boat or equipment may be inspected at any time for compliance with class rules and sailing instructions. On the water, a boat can be instructed by a race committee measurer to proceed immediately to a designated area for inspection.

OFFICIAL BOATS

Official boats will be marked by flying a blue flag with the race committee emblem, by flying a yellow flag or by flying a yellow flag with the race committee emblem.

SUPPORT BOATS

Team leaders, coaches and other support personnel shall stay outside areas where boats are racing from the time of the preparatory signal for the first class to start until all boats have finished or the race committee signals a postponement, general recall or abandonment.

RADIO COMMUNICATION

A boat shall neither make radio transmissions while racing nor receive radio communications not available to all other boats. This restriction also applies to mobile telephones. A boat shall neither make radio transmissions while racing nor receive radio communications not available to all other boats. This restriction also applies to mobile telephones.

PRIZES

Except for the Championship Series, prizes will be awarded based on the number entries in each class: 3 or more, first place; 5 or more, second place; 8 or more, third place; 11 or more, fourth place; 15 or more, fifth place. Only first place prizes will be awarded for the Championship Series. Prizes for the July Series, August Series and Championship Series will only be awarded if a fleet completes more than 50% of the scheduled races. The Race Committee may grant exceptions in the case of race cancellations or abandonment because of weather.

DISCLAIMER OF LIABILITY

Competitors participate in the regatta entirely at their own risk. See rule 4, Decision to Race. The organizing authority will not accept any liability for material damage or personal injury or death sustained in conjunction with or prior to, during, or after the regatta.

